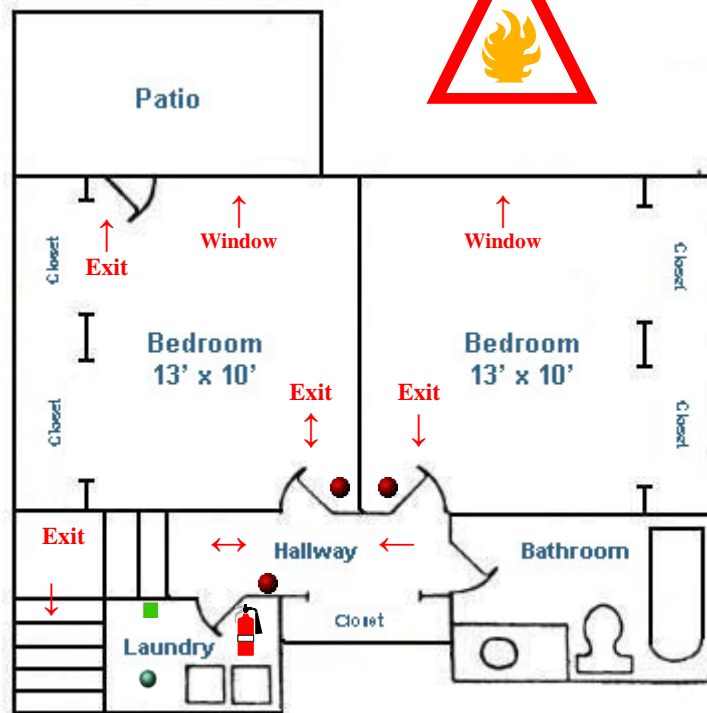


EMERGENCY AND FIRE ESCAPE PLAN



Fire Extinguisher



10 yr Smoke Alarm



Carbon Monoxide Detector



Emergency & Fire Escape Plan Location

EVACUATION:

- If you hear the smoke alarm, carbon monoxide detector or a fire is detected, evacuate everyone from the building
- As you exit, close doors behind you
- If a fire exists and cannot be extinguished with fire extinguishers provided by the Landlord, call the fire department (911) immediately
- Notify your neighbors if an active hazard exists
- If there is time, move your cars out of driveway
- Call the Landlord or Landlord's agent

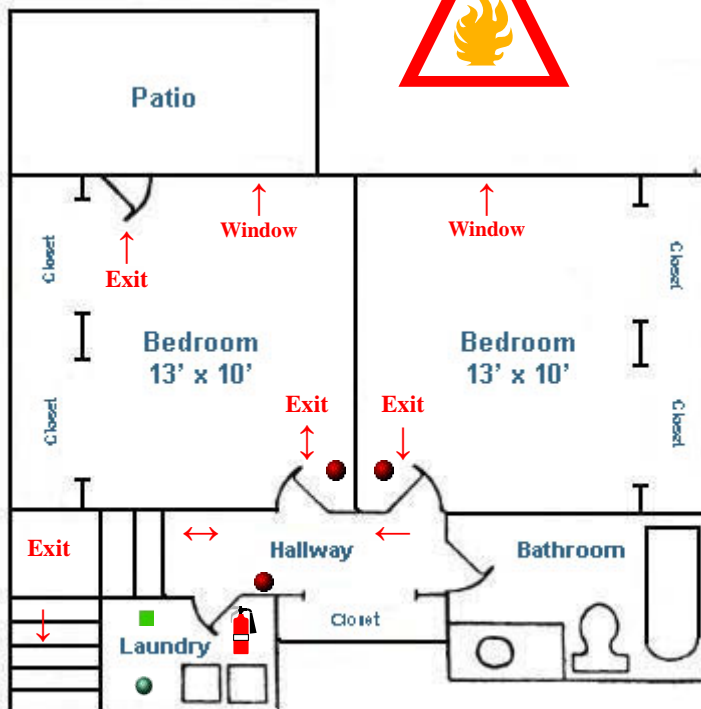
BE PREPARED:

- Have an emergency escape plan and practice it
- Familiarize yourself with at least two exits from each room and the location of fire extinguishers
- Designate a meeting place outside of your home
- Consider purchasing a fire escape ladder as an alternate exit from upper level windows or decks
- Do not obstruct windows, doors, stairways and hallways or install any devices that would limit exiting the unit in the event of a fire
- Never tamper with or disable alarms & equipment
- Test alarms & inspect fire extinguishers regularly
- Contact the Landlord if alarms or equipment are malfunctioning, expired or need new batteries
- Purchase renters insurance, it's inexpensive





EDUCATION:

- An estimated 40% of fatal fires involve the use of alcohol by victims, family members or friends
- Never leave food cooking and unattended
- Always use care when grilling by the building
- Never leave space heaters, irons, electric blankets, cigarettes, candles, etc. unattended
- Don't store flammable or chemical product in or about your home that can constitute a fire hazard
- Illegal fireworks are prohibited at our properties
- The use of holiday lights which hang from or attach to the roof, siding, gutters or any part of the buildings structure, is prohibited
- Never overload electrical sockets or cords

EMERGENCY AND FIRE ESCAPE PLAN



Lower Level

-  Fire Extinguisher
-  10 yr Smoke Alarm
-  Carbon Monoxide Detector
-  Emergency & Fire Escape Plan Location

EVACUATION:

- If you hear the smoke alarm, carbon monoxide detector or a fire is detected, evacuate everyone from the building
- As you exit, close doors behind you
- If a fire exists and cannot be extinguished with fire extinguishers provided by the Landlord, call the fire department (911) immediately
- Notify your neighbors if an active hazard exists
- If there is time, move your cars out of driveway
- Call the Landlord or Landlord's agent

BE PREPARED:

- Have an emergency escape plan and practice it
- Familiarize yourself with at least two exits from each room and the location of fire extinguishers
- Designate a meeting place outside of your home
- Consider purchasing a fire escape ladder as an alternate exit from upper level windows or decks
- Do not obstruct windows, doors, stairways and hallways or install any devices that would limit exiting the unit in the event of a fire
- Never tamper with or disable alarms & equipment
- Test alarms & inspect fire extinguishers regularly
- Contact the Landlord if alarms or equipment are malfunctioning, expired or need new batteries
- Purchase renters insurance, it's inexpensive

EDUCATION:

- An estimated 40% of fatal fires involve the use of alcohol by victims, family members or friends
- Never leave food cooking and unattended
- Always use care when grilling by the building
- Never leave space heaters, irons, electric blankets, cigarettes, candles, etc. unattended
- Don't store flammable or chemical product in or about your home that can constitute a fire hazard
- Illegal fireworks are prohibited at our properties
- The use of holiday lights which hang from or attach to the roof, siding, gutters or any part of the buildings structure, is prohibited
- Never overload electrical sockets or cords

EMERGENCY AND FIRE ESCAPE PLAN

EVACUATION:

- If you hear the smoke alarm, carbon monoxide detector or a fire is detected, evacuate everyone from the building
- As you exit, close doors behind you
- If a fire exists and cannot be extinguished with fire extinguishers provided by the Landlord, call the fire department (911) immediately
- Notify your neighbors if an active hazard exists
- If there is time, move your cars out of driveway
- Call the Landlord or Landlord's agent

BE PREPARED:

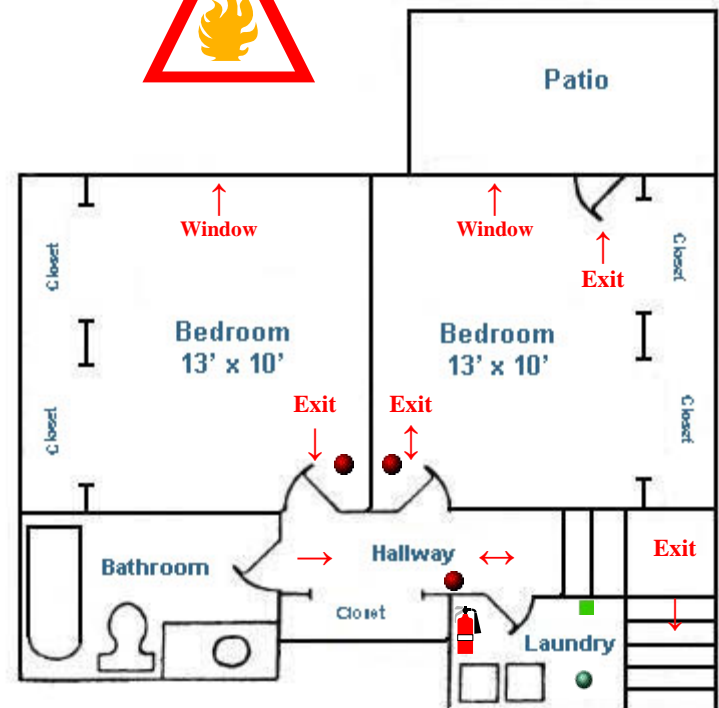
- Have an emergency escape plan and practice it
- Familiarize yourself with at least two exits from each room and the location of fire extinguishers
- Designate a meeting place outside of your home
- Consider purchasing a fire escape ladder as an alternate exit from upper level windows or decks
- Do not obstruct windows, doors, stairways and hallways or install any devices that would limit exiting the unit in the event of a fire
- Never tamper with or disable alarms & equipment
- Test alarms & inspect fire extinguishers regularly
- Contact the Landlord if alarms or equipment are malfunctioning, expired or need new batteries
- Purchase renters insurance, it's inexpensive

EDUCATION:





- An estimated 40% of fatal fires involve the use of alcohol by victims, family members or friends
- Never leave food cooking and unattended
- Always use care when grilling by the building
- Never leave space heaters, irons, electric blankets, cigarettes, candles, etc. unattended
- Don't store flammable or chemical product in or about your home that can constitute a fire hazard
- Illegal fireworks are prohibited at our properties
- The use of holiday lights which hang from or attach to the roof, siding, gutters or any part of the buildings structure, is prohibited
- Never overload electrical sockets or cords



Upper Level



Lower Level

-  Fire Extinguisher
-  10 yr Smoke Alarm
-  Carbon Monoxide Detector
-  Emergency & Fire Escape Plan Location

EMERGENCY AND FIRE ESCAPE PLAN

EVACUATION:

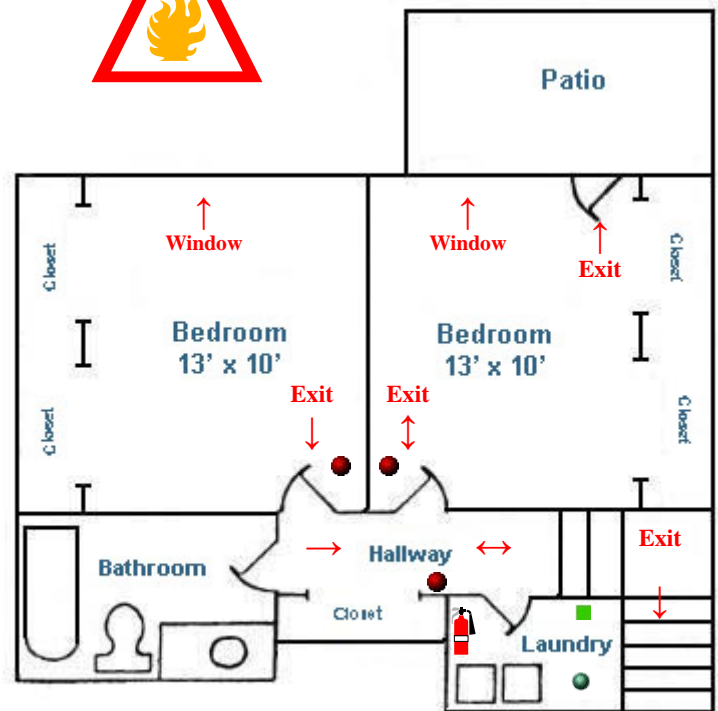
- If you hear the smoke alarm, carbon monoxide detector or a fire is detected, evacuate everyone from the building
- As you exit, close doors behind you
- If a fire exists and cannot be extinguished with fire extinguishers provided by the Landlord, call the fire department (911) immediately
- Notify your neighbors if an active hazard exists
- If there is time, move your cars out of driveway
- Call the Landlord or Landlord's agent

BE PREPARED:





- Have an emergency escape plan and practice it
- Familiarize yourself with at least two exits from each room and the location of fire extinguishers
- Designate a meeting place outside of your home
- Consider purchasing a fire escape ladder as an alternate exit from upper level windows or decks
- Do not obstruct windows, doors, stairways and hallways or install any devices that would limit exiting the unit in the event of a fire
- Never tamper with or disable alarms & equipment
- Test alarms & inspect fire extinguishers regularly
- Contact the Landlord if alarms or equipment are malfunctioning, expired or need new batteries
- Purchase renters insurance, it's inexpensive

EDUCATION:

- An estimated 40% of fatal fires involve the use of alcohol by victims, family members or friends
- Never leave food cooking and unattended
- Always use care when grilling by the building
- Never leave space heaters, irons, electric blankets, cigarettes, candles, etc. unattended
- Don't store flammable or chemical product in or about your home that can constitute a fire hazard
- Illegal fireworks are prohibited at our properties
- The use of holiday lights which hang from or attach to the roof, siding, gutters or any part of the buildings structure, is prohibited
- Never overload electrical sockets or cords



Lower Level

-  Fire Extinguisher
-  10 yr Smoke Alarm
-  Carbon Monoxide Detector
-  Emergency & Fire Escape Plan Location